

STUDENT MICROSCOPES



BOECO STUDENT MICROSCOPES, MODEL BM-117

Optical Head: Binocular or Monocular Head, 30° inclined, 360° rotatable,
 Nosepiece: Backward Quadruple revolving nosepiece
 Eyepiece: Widefield Eyepiece WF 10X /18 mm
 Objectives: Achromatic DIN Objectives
 4x/0.10, 10x/0.25, 40x/0.65 (S), 100x/1.25, Oil, (S)
 Stage: Double Layers mechanical stage 132 x 142 mm
 Travel aerea 75 x 40 mm,
 Focusing: Coaxial Coarse & Fine Adjustment System
 Range 24 mm, Fine Division 0,004 mm
 Condenser: Abbe Condenser, n.A. 1,2, with iris
 diaphragm and filter
 Illumination: S-LED. light intensity adjustable
 Body /power: Sturdy body with supportive rubber and
 inbuilt power supply 110-240V
 Supplied with: Dust cover, green filter, spare fuses, Immersion oil
 Dimension: 170 x 310 x 355 mm, netweight 5 kg
 Packing: Styrofoam shelve in a cardboard box

Code	Description
BOE 1170.100	Model BM-117 Binocular, 110-240V, 50/60Hz, Euro plug
BOE 1170.101	Model BM-117 Binocular, 110-240V, 50/60Hz, US Plug
BOE 1170.110	Model BM-117 Monocular, 110-240V, 50/60Hz, Euro Plug
BOE 1170.111	Model BM-117 Monocular, 110-240V, 50/60Hz, US Plug



BOECO STUDENT MONOCULAR MICROSCOPE MODEL 10

Specification Model 10:

Optical Head: Monocular Head, 45° inclined,
 Nosepiece: Triple revolving nosepiece
 Eyepiece: Pair Eyepiece WF 10X /18 mm Widefield
 Objectives: Achromatic DIN Objective
 4x/0.10, 10x/0.25, 40x/0.65, spring loaded
 Stage: Plain stage with attachable mechanical stage. 110 x
 120 mm, Travel aerea 60 x 30 mm
 Focusing: Coaxial coarse and Fine Adjustment, Range 10 mm
 Condenser: Abbe Brightfield condenser, n.A. 1,25, with iris
 diaphragm and green filter. Spiral Adjustment for
 Condenser
 Illumination: 1W LED, Brightness adjustable
 Supplied with: Reflecting Mirror, Dust cover, spare fuse
 Power: Output DC 7,5V
 Dimension: 180x130x340 mm
 Packing: Styrofoam shelve in a cardboard box, 28x20x40cm, 3,3kg

Code	Description
BOE 1000.030	Model 10, 100-220V, 50/60Hz, Euro Plug AC adapter
BOE 1000.031	Model 10, 100-220V, 50/60Hz, US Plug AC adapter

Objectives for BM-120 and BM-117, Model 10

Code	Description
BOE 1800.403	BOECO DIN Achromatic Objective 4X
BOE 1800.402	BOECO DIN Achromatic Objective 10X
BOE 1800.409	BOECO DIN Achromatic Objective 20X
BOE 1800.404	BOECO DIN Achromatic Objective 40X (S)
BOE 1800.406	BOECO DIN Achromatic Objective 100X (S) (Oil)



STEREO MICROSCOPES

BOECO ZOOM STEREO MICROSCOPE MODEL BSZ-405

Specification BSZ-405:

Optical head: Binocular head inclined at 45°
 Interpupillary Distance 55 - 75 mm
 Eyepiece dioptic adjustment range ± 5D
 Working distance: 97 mm
 Field of View: 20,0 to 4.4 mm diam.
 Eyepiece: EWF 10X/20 eyepieces
 Zoom Optics: 1X to 4,5X , Zoom ratio 1:4,5
 Illumination: 2-way illumination
 LED 1,2W Reflected (upper) illumination
 LED 0,7W Transmitted (lower) illumination
 Stage Plate: Frosted glass stage plate 9 cm
 Base: Stable 262 x 185 mm base, fitted with anti-skid
 rubber feet
 Main Body 360° rotatable
 Dimensions: 185 (W) x 262 (L) x 315 (H) mm, Netweight 4,5 kg
 Packing: 360 x 310 x 530 mm, Grossweight 6,5 kg

Code	Description
BOE 4050.000	BSZ-405, Binocular, 100-240V, 50-60Hz, Euro plug
BOE 4050.001	BSZ-405, Binocular, 100-240V, 50-60Hz, USA plug
BOE 4050.300	BSZ-405/T, Trinocular, 100-240V, 50-60Hz, Euro plug
BOE 4050.301	BSZ-405/T, Trinocular, 100-240V, 50-60Hz, USA plug

optional Code	Description
BOE 3460.020	Wide Field Eyepiece WF 20x/12 w/ diopter adjustment
BOE 4050.002	Auxiliary Objective 2x, for BSZ-405 and BS-80
BOE 4050.007	Auxiliary Objective 0,75x, for BSZ-405 and BS-80



BSZ-405 TRINOCULAR WITH HDCE-20C DIGITAL MICROSCOPE CAMERA



BOECO ZOOM STEREO MICROSCOPE MODEL BST-606

Specification BST-606:

Optical head: Binocular head inclined at 45°
 Interpupillary Distance 55 - 75 mm
 Eyepiece dioptic adjustment range ± 5D
 Working distance: 115 mm
 Field of View: 28,0 to 4.5 mm diam.
 Eyepiece: EWF 10X/22 eyepieces with eyeshadow
 Zoom Optics: 0,8X to 5X, Zoom ratio 1:6,3
 Illumination: 2-way illumination switch allows upper and
 lower illumination
 Transmitted (lower) LED light source 100V-240V.
 Incident (upper) LED light source 100V-240V
 Stage Plate: 100 mm ø frosted glass stage plate and black/white
 reversible stage plate
 Base: Stable 300x225 mm base, fitted with anti-skid
 rubber feet
 Main Body 360° rotatable
 Dimensions: 300 (W) x 225 (L) x 300 (H) mm, Netweight 6,15 kg
 Packing: 400 x 340 x 670 mm, Grossweight 10,1 kg

Code	Description
BOE 6060.000	BST-606, EURO Plug
BOE 6060.001	BST-606, US Plug
BOE 6060.300	BST-606/T, Trinocular, Euro Plug
BOE 6060.301	BST-606/T, Trinocular, US Plug

optional Code	Description
BOE 3460.020	Wide Field Eyepiece WF 20x/12 w/ diopter adjustment
BOE 6060.002	Auxiliary Objective 2x, for BST-606
BOE 6060.005	Auxiliary Objective 0,5x, for BST-606



BOECO STEREO MICROSCOPE MODEL BS-80



Specification BS-80:

Optical head	Binocular head inclined at 45° Interpupillary Distance 55 - 75 mm Eyepiece dioptic adjustment range ± 5D
Working distance:	100 mm
Eyepiece:	WF10X/23 eyepieces
Stereo Optics:	Objectives 2x & 4X in revolving nosepiece
Illumination:	2-way LED transmission and reflecting illumination Top Illuminator 1W, Bottom Illuminator 0,5W
Stage Plate:	Frosted glass stage plate and black/white reversible stage plate
Base:	Stable 262 x 185 mm base, fitted with anti-skid rubber feet
Dimensions:	262 (L) x 262 (L) x 315 (H) mm, Netweight 4,80
Packing:	380 x 340 x 410 mm, Grossweight 6,40 kg

Code	Description
BOE 3800.000	BS-80, AC 110-240V, 50-60HZ, EURO Plug
BOE 3800.001	BS-80, AC 110-240V, 50-60HZ, US Plug

optional

Code	Description
BOE 3460.020	Wide Field Eyepiece WF 20x/12 w/ diopter adjustment
BOE 4050.002	Auxiliary Objective 2x, for BS-80 and BSZ-405
BOE 4050.007	Auxiliary Objective 0,75x, for BS-80 and BSZ-405

DIGITAL MICROSCOPE CAMERAS

for capture of microscope images and display of real-time live video on a computer screen. Delivered incl. optical relay lens 0,45x, USB 2.0 cable, Eyepiece tube adapter Ø23,2/Ø30 mm and image processing software.



MDCE-5C



HDCE-20C



HDCE-X5 / 90D

Specifications:

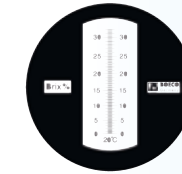
Model:	MDCE-5C	HDCE-20C	HDCE-X5	HDCE-90D
Type:	1.3M pixel	2.0M pixel	5.0M pixel	9.0M pixel
Image Sensor:	1/3,2" CMOS	1/3,2" CMOS	1/2,5" CMOS	1/2,3" CMOS
Pixel size:	5,6	5,6	7,13	7,63
Viewing field:	69%	69%	88%	94%
Diagonal:	2,8µm x 2,8µm	2,8µm x 2,8µm	2,2µm x 2,2µm	1,75µm x 1,75µm
Relay lens:	0,45x	0,45x	0,45x	0,45x
Image format:	1280x1024	1600x1200	2592x1944	3488x2616
SNR:	42,3dB	42,3dB	40dB	37,4dB
Dynamic Range:	71dB	71dB	66,5dB	62,7dB
Exposure Time:	approx. 20s -1/1000s	approx. 20s -1/1000s	approx. 15s -1/1500s	approx. 1-500ms
Effective No.:	10bit, on chip	10bit, on chip	12bit, on chip	12bit on chip
Sensitivity:	1,0 V/lux-sec (550nm)	1,0 V/lux-sec (550nm)	0,53 V/lux-sec (550nm)	0,44 V/lux-sec (550nm)
Out Put:	Auto/Manual Exposure			
White Balance:	Auto/Manual White Balance			
Connecting Mode:	Insert it into Eyepiece Tube of Microscope directly or using standard C mount			
Image Output:	USB 2.0			
Working Temp.:	-30°C - 70°C			
Windows System:	Windows 2000/XP/Vista/Win 7/ (Win 8 only MDCE-5C and HDCE-20C), 32bit or 64bit			
Max OS X:	Support, driver free, with MAC's own native image software like Photobooth or IChat you can take pictures and recordvideo with the camera. (Not valid for HDCE-90D)			
Image software:	ScopelImage (only Windows) (7 languages)			

Code	BOE 1800.805	BOE 1800.806	BOE 1800.811	BOE 1800.819
------	--------------	--------------	--------------	--------------

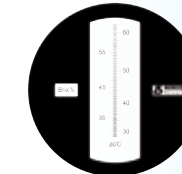
REFRACTOMETER

BOECO HAND REFRACTOMETER

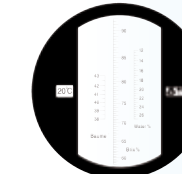
Code	Description
BOE 30103	Saccharic Concentration 0-32 % Resolution: 0,2 %



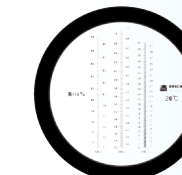
Code	Description
BOE 30104	Saccharic Concentration 28-62 % Resolution: 0,2 %



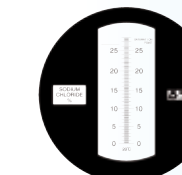
Code	Description
BOE 30106	Saccharic Concentration 58-90% 58-90% Brix, 38°-43°Be', 17-27% water Resolution: 0,5 % Brix, 0,5° Be', 1% water (Sugar content, Baume and Water content)



Code	Description
BOE 30107	Saccharic Concentration 0-90 % (3 ranges) 0-42%, 42-71%, 71-90% Resolution: 0,2 %



Code	Description
BOE 30202	Salinity 0-28 % Resolution: 0,2 %



Code	Description
BOE 30301	Protein in Serum 0-12g/dl / 0,2 g/dl Urine Gravity 1.000-1.040 / 0,002 sg



DIGITAL HAND REFRACTOMETER

with Automatic Temperature Compensation,
Dimension: 135x65x40 mm

Code	Description
BOE 32145	Range: 0-45 % Brix Resolution: 0,1% Accuracy: ± 0,2 % Refractiv Index: 1.3330 - 1.4098 Resolution: 0,0001 Accuracy: ± 0,0003
BOE 32195	Range: 0-95 % Brix Resolution: 0,1% Accuracy: ± 0,2 % Refractiv Index: 1.3330 - 1.5300 Resolution: 0,0001 Accuracy: ± 0,0002

